

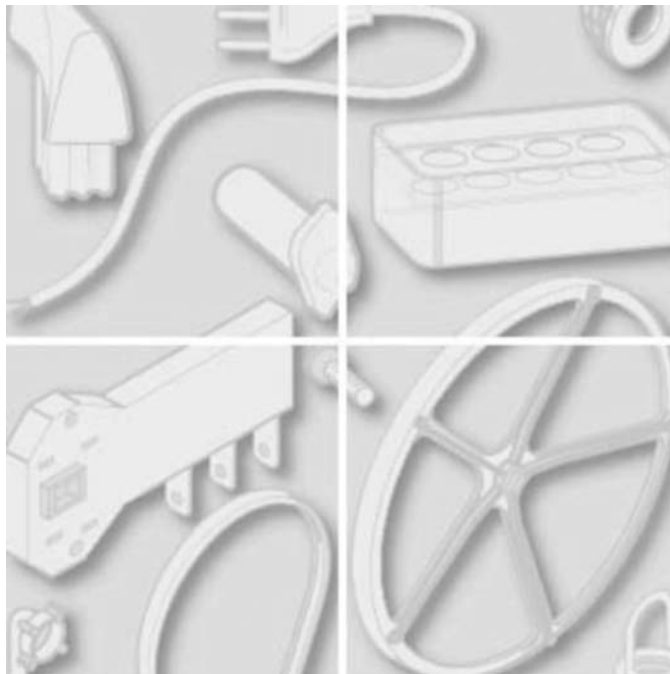


# ARISTON

---

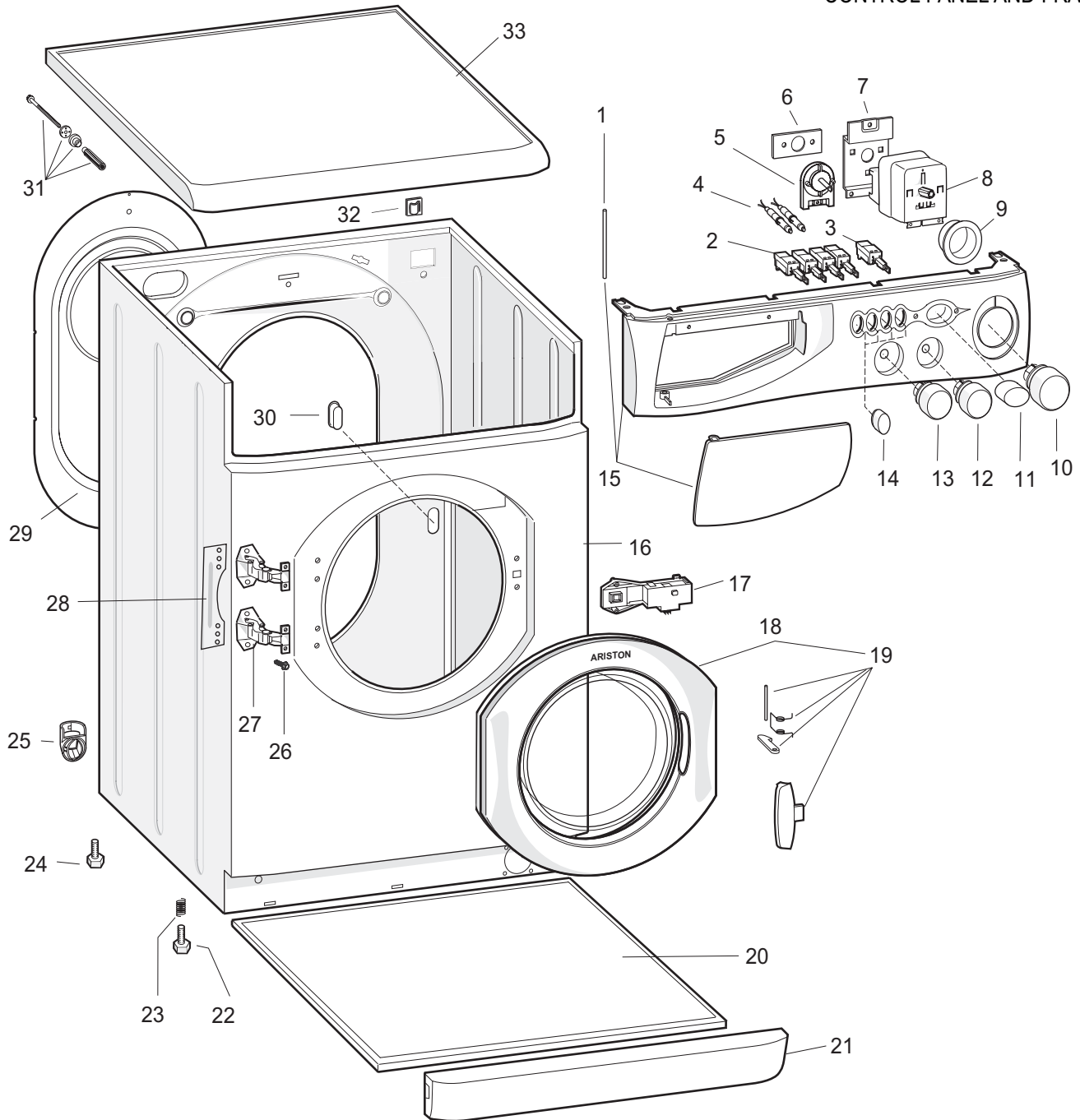
## REPAIR PART DIAGRAMS

---

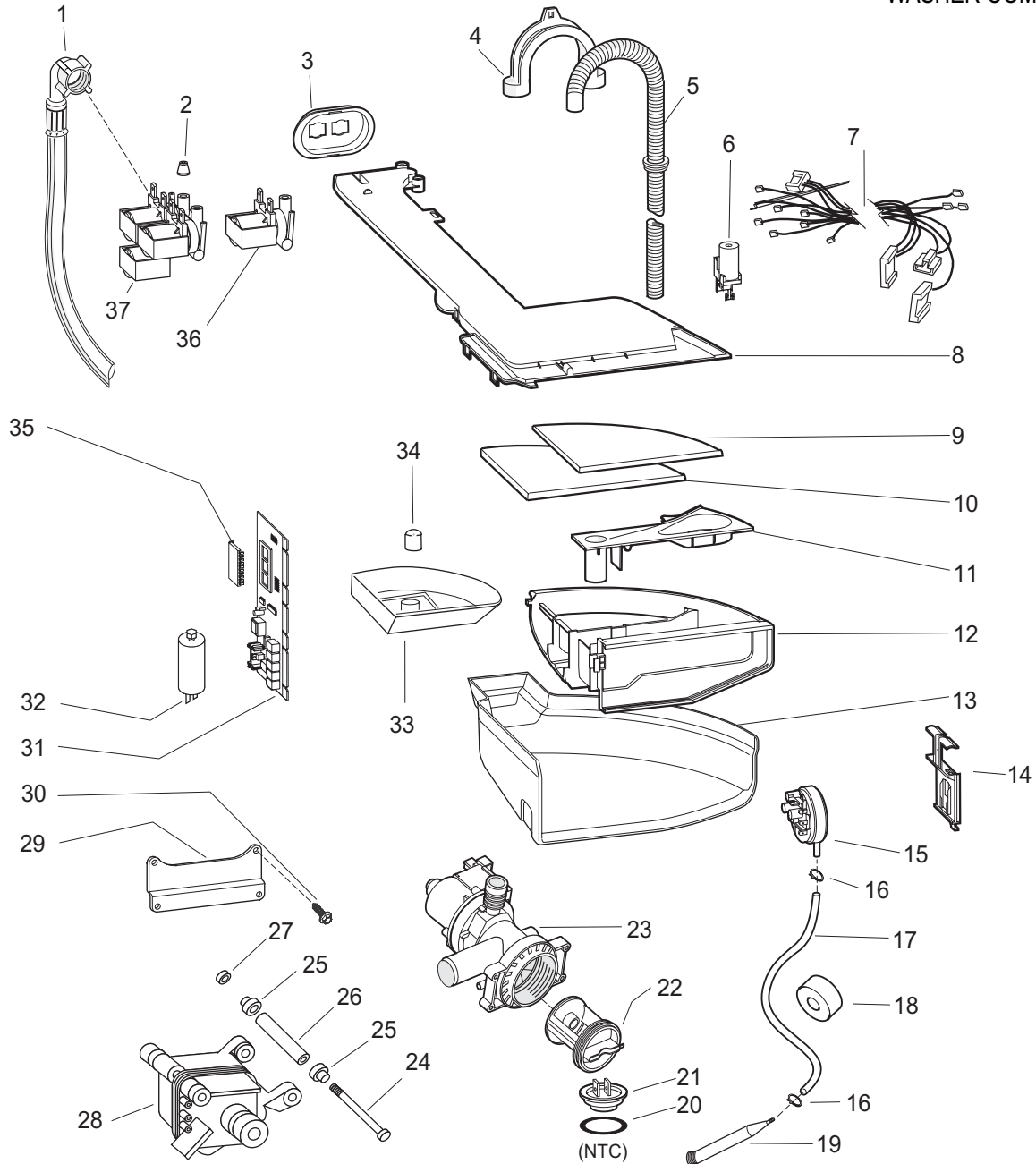


**PRODUCT: WASHER/DRYER COMBO**

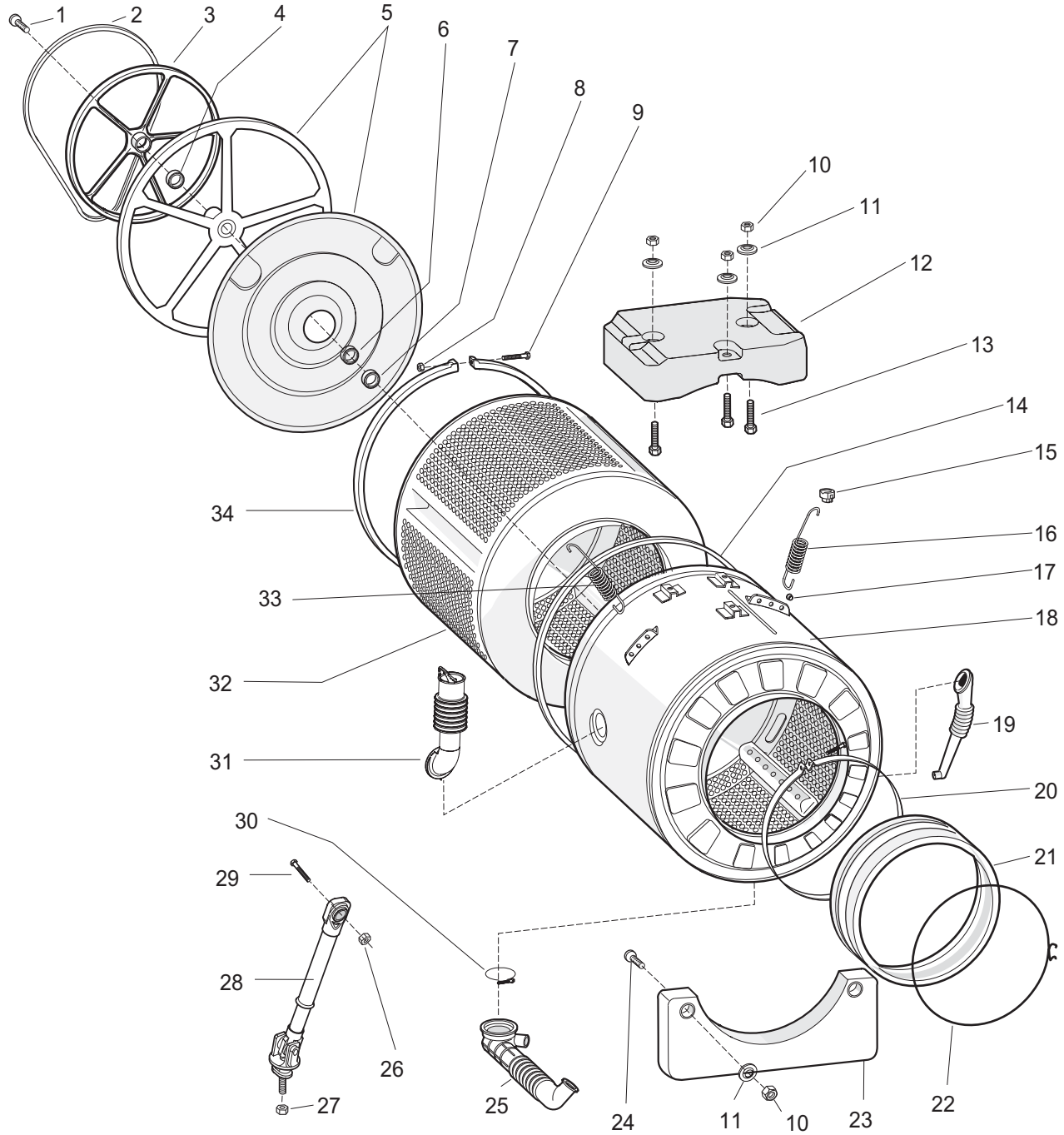
**MODEL: AWD 120**



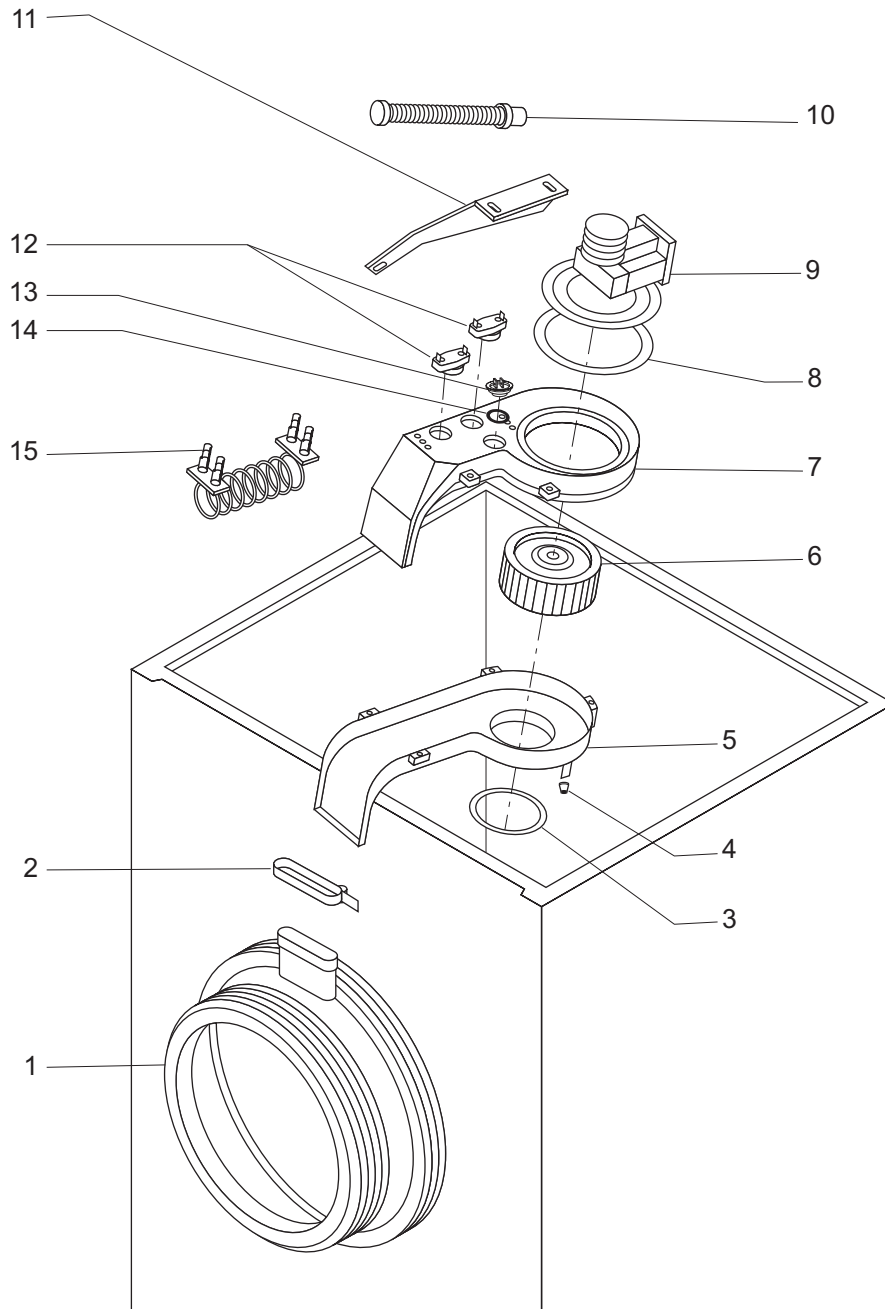
Item	Part #	Description	Item	Part #	Description
1	065186	Pivot Pin, Dispenser Drawer	18	082825	Door Assy.
2	088394	Selector Switch	19	065250	Door Handle Assy.
3	090218	On / Off Switch	20	098183	Base Plate
4	086663	Indicator Lamp	21	064505	Toe Kick, White
5	085195	Potentiometer, Spin Speed or Dry Time	22	081702	Front Leveling Leg
6	099627	Mounting Plate, On-Off Switch	23	059869	Spring
7	064784	Bracket, Timer Support	24	081701	Rear Leveling Leg
8	090195	Program Selector	25	046666	Collar, Drain Hose
9	099647	Program Disc	26	074149	Bolt M4X9
10	064506	Wash Timer Knob, White	27	064541	Door Hinge Assy.
11	064509	Button, White	28	064539	Plate, Door Hinge
12	099637	Thermostat Knob, White	29	081698	Rear Cover, White
13	099638	Dry Time Knob, White	30	084817	Cap
14	064507	Button, White	31	098182	Shipping Bolt Kit
15	099643	Control Panel Assy., White	32	041575	Adhesive Hook
16	099624	Cabinet, White	33	099649	Top Panel, White
17	090199	Door Interlock			



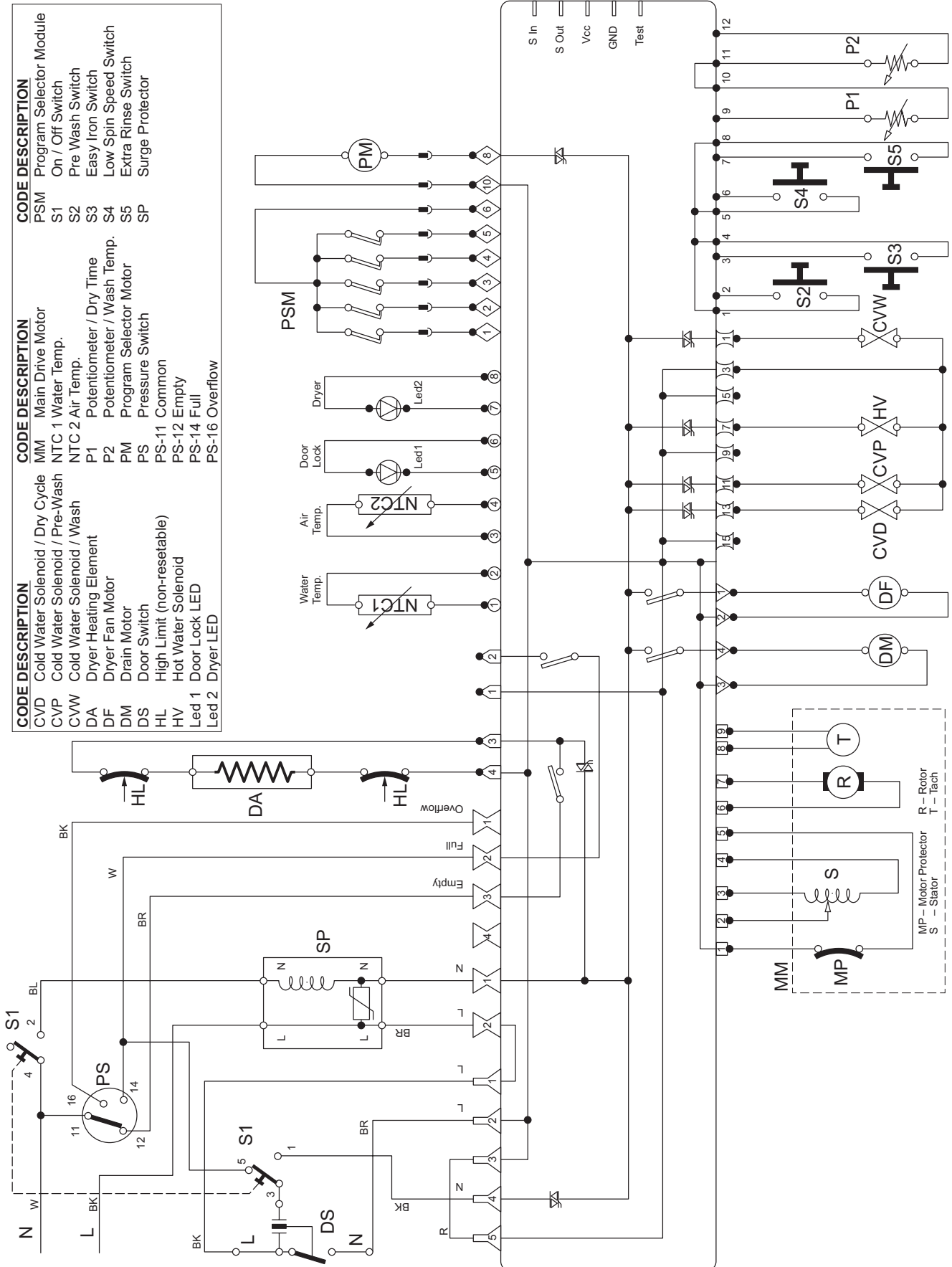
Item	Part #	Description	Item	Part #	Description
1	069227	Inlet Hose	20	085458	Gasket, Temperature Sensor
2	064534	Seal, Water Valve	21	080767	Temperature Sensor (NTC)
3	086586	Support, Water Valve	22	045027	Filter, Drain Pump
4	019902	Support, Drain Hose	23	090207	Drain Pump
5	027466	Drain Hose	24	074152	Bolt M6 X 30
6	090332	Filter, Electronics	25	074151	Rubber Bushing
7	109536	Wire Harness	26	074153	Spacer
8	099639	Dispenser Cover	27	065152	Nut M6
9	099625	Program Guide	28	090196	Main Motor
10	065733	Support, Program Guide	29	081720	Mounting Plate
11	046154	Fabric Softener Cover	30	041611	Screw M8X15
12	046148	Soap Dispenser Drawer	31	090505	Control Board (must also order 099642)
13	092176	Soap Dispenser Housing	32	091054	Surge Protector
14	064537	Support, Pressure Switch	33	075459	Additive Container
15	090200	Pressure Switch	34	046157	Stopper, Detergent Dispenser
16	092412	Hose Clamp	35	099642	EEPROM Program Chip (must also order 090505)
17	041785	Hose, Air Trap	36	099640	Water Valve (hot)
18	019755	Foam Vibration Damper	37	099641	Water Valve, 3-Way (cold)
19	053409	Air Trap			



Item	Part #	Description	Item	Part #	Description
1	064786	Bolt M8X20	18	095721	Outer Drum
2	082812	Belt	19	081750	Hose, Detergent Recovery
3	066080	Drum Pulley	20	090145	Boot Clamp
4	013563	Bearing	21	090201	Boot
5	082638	Star Wheel	22	064546	Boot Clamping Ring
6	002591	Bearing	23	081717	Front Counterweight
7	035999	Bearing Seal	24	051581	Bolt M8X35
8	055305	Nut, Clamping Band	25	083293	Hose, Tank to Pump
9	055304	Bolt, Clamping Band	26	098723	Nut M8
10	091062	Nut	27	065152	Nut M6X20X1
11	041607	Washer	28	098722	Shock Absorber
12	089965	Upper Counterweight	29	098724	Bolt M8X45
13	091065	Screw M8X70	30	061958	Clamp
14	036066	Tub Gasket, Stainless Steel	31	092273	Hose, Dispenser to Tank
15	064515	Spring Anchor	32	083703	Inner Drum
16	082322	Spring, RH	33	089967	Spring, LH
17	074041	Spring Ring	34	036065	Clamping Band



Item	Part #	Description	Item	Part #	Description
1	090201	Boot	9	090215	Blower Motor
2	031331	Clamp	10	089986	Condenser Hose
3	041619	Gasket	11	089985	Support
4	108897	Gasket	12	089982	High Limit (Non-Resetable)
5	078360	Blower Housing, Lower	13	080767	NTC
6	036080	Impeller Assy.	14	080768	O-Ring
7	089979	Blower Housing, Upper	15	090214	Heating Element (120v / 1200w)
8	041625	Gasket, Blower Motor			





## **FAULT CODES**

A repair fault is signaled by the continuous rotating of the Program Knob and the flashing of the Door Locked LED. The Fault Code is determined by counting the sequence of individual flashes of the LED (2 flashes = F2). The LED will flash the Fault Code sequence and then delay for approximately eight (8) seconds, repeating the Fault Code sequence and eight second delay continually.

**TECH NOTE:** The unit can be turned off without harm and the Fault Code sequence will repeat when power is reapplied.

### **F1. Triac Short**

Replace Control Board.

### **F2. Main Motor**

Check Main Motor connections.  
Replace Main Motor.  
Or, replace Control Board.

### **F3. NTC (Water Temp) Open / Short**

Check wiring continuity to Control Board.  
Replace NTC.  
Or, replace Control Board.

### **F4. Pressure Switch**

Check wiring continuity to Control Board.  
Replace Pressure Switch.  
Or, replace Control Board.

### **F5. Blocked Drain Motor or Pressure Switch shorted in Empty position**

Check Drain Hose.  
Check Drain Motor clean out for obstruction.  
Check voltage at Drain Motor.  
Check Pressure Switch wiring continuity.  
Replace Drain Motor / Pressure Switch.  
Or, replace Control Board.

### **F6. Program Selector**

Check wiring continuity to Control Board.  
Replace Program Selector.  
Or, replace Control Board.

### **F7. Not Used**

### **F8. Pressure Switch Shorted in Full Position**

Check Pressure Switch wiring continuity.  
Or, replace Pressure Switch.  
Or, replace Control Board.

### **F9. Control Board Error**

Incorrect version of Control Board or EEPROM.  
Change Control Board and EEPROM.

### **F10. Pressure Switch Shorted**

Check wiring continuity to Control Board.  
Replace Pressure Switch.  
Or, replace Control Board.

### **F11. Drain Motor**

Check wiring continuity to Control Board.  
Check Drain Motor clean out for obstruction.  
Voltage check at Drain Motor.  
Check Pressure Switch.  
Replace Drain Motor.  
Or, replace Control Board.

### **F12. Not Used**

## **F13 - F16 Apply Only to AWD 120**

### **F13. NTC (Dryer Temp) Open / Short**

Check wiring continuity to Control Board.  
Replace NTC.  
Or, replace Control Board.

### **F14. Dryer Heating Element is Open**

Check Dryer Heating Element continuity.  
Check wiring from Element to Control Board.  
Replace Heating Element.  
Or, replace Control Board

### **F15. Dryer Heating Element Relay Shorted**

Check Dryer Heating Element continuity.  
Check wiring from Element to Control Board.  
Replace Control Unit.

### **F16. Not Used**